



POINT-TO-MULTIPOINT AP 105 ACCESS POINT

CONNECTIVITY FOR DATA, VOICE AND VIDEO

The Motorola Wireless Broadband Point-to-Multipoint (PMP) AP 105 Access Point is the ideal solution for developing, enhancing and extending advanced broadband networks and services into areas with 10 or fewer subscribers. The AP 105 provides cost effective, full featured connectivity for low density areas, with the option to add capacity through a software upgrade as the number of subscribers grows.

Motorola Wireless Broadband products combine field-proven toughness with exceptional performance, security, ease-of-use and cost effectiveness. AP 105 modules are available with total throughputs of up to 14 Mbps for data, video and voice applications. Available in frequencies from 900 MHz and 2.4 GHz to 5 GHz, with an array of options and accessories, AP 105 Access Points are the right choice for building or extending broadband connectivity to low density areas for residential, business and government applications. AP 105 modules are available with either integrated antennas or as connectorized versions with industry standard connectors.

WHY MOTOROLA WIRELESS ACCESS NETWORK SOLUTIONS ARE SUPERIOR

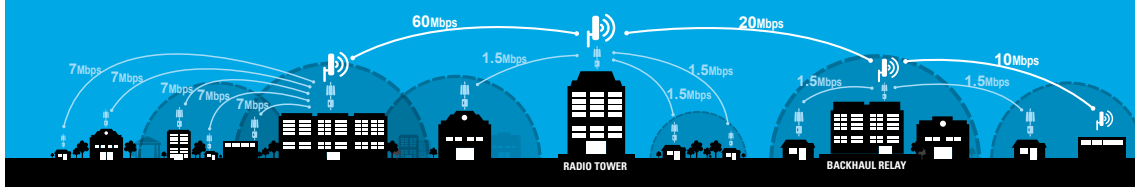
- **Industry Leading Interference Tolerance** – Motorola access network solutions provide an industry leading Carrier to Interference (C to I) ratio and utilize GPS synchronization to mitigate self interference.
- **Fast, Simple Installation** – Access Points and Subscriber Modules have easy to use alignment tools and do not require an equipment room or environment controlled area at the AP tower location.
- **Reliable Hardware Performance Over Time** – Motorola equipment operates with a passive heating and cooling system. This design achieves increased reliability and availability through extended periods of time.
- **Proven Throughput Performance** – Network equipment performance specifications are the results of actual field performance - not values measured in an indoor noise free lab environment.
- **Scalable as Subscriber Base Grows** – GPS synchronization enables operators to build networks that grow with demand.



AP 105

ANYWHERE ACCESS

BACKHAUL
DISTRIBUTION
OUTDOOR ACCESS



PMP Access and Distribution Network

AP 105

FREQUENCY	900 GHz	2.4 GHz	5.2 GHz	5.4 GHz	5.8 GHz
-----------	---------	---------	---------	---------	---------

PERFORMANCE

Signaling Rate	20 Mbps				
Typical Aggregate Useful Throughput	14 Mbps				
Latency	5 - 7 msec round trip				
Mean Time Between Failure	Greater than 100 years				
Modulation Type	High Index 2-level and 4-level Frequency Shift Keying (FSK) optimized for interference rejection				
Access Method	Time Division Duplexing/Time Division Multiple Access (TDD/TDMA)				

SPECTRUM

Frequency Range of Band	902-928 MHz	2.4105-2.4575 GHz	5.25-5.35 GHz	5.47-5.725 GHz	5.725-5.85 GHz
Channel Width	8 MHz	20 MHz			
Non-Overlapping Channels	3	2	3	Up to 12	6
Channel Spacing	Configurable in 1 MHz increments	Configurable in 2.5 MHz increments	Configurable in 5 MHz increments		

LINK BUDGET

Nominal Receiver Sensitivity (dBm typical)	-90 dBm @ 2 Level FSK, -87 dBm @ 4 Level FSK	-86 dBm @ 2 Level FSK, -79 dBm @ 4 Level FSK			
Antenna Gain (dBi)	12 dBi	8 dBi	7 dBi		
EIRP	36 dBm	Up to 33 dBm	Up to 30 dBm		
DC Power (typical)	9.5 W	7.5 W			

ANTENNA

Antenna Beam Width	35 degree elevation, 60 degree horizontal	3 dB antenna beam width 60 degrees, Azimuth and Elevation			
Horizontal Polarized Option	YES	n/a	YES	YES	YES

PHYSICAL

Temperature	-40° F to +131° F (-40° C to +55° C)				
Wind Survival	118 miles/hr (190 km/hr)				
Dimensions	11.75 in H x 3.4 in W x 3.4 in D (29.9 cm H x 8.6 cm W x 8.6 cm D)				
Weight	1 lb (.45 kg)				

INTERFACE

Interface	10/100 Base T, half/full duplex. Rate auto negotiated (802.3 compliant)				
Protocols Used	IPV4, UDP, TCP, ICMP, Telnet, HTTP, FTP, SNMP, PPPoE				
Network Management	HTTP, TELNET, FTP, SNMP Version 2c				
VLAN	802.1Q with 802.1p Priority				

CERTIFICATIONS

FCC ID	ABZ89FC5809	ABZ89FC5808	ABZ89FC3789	ABZ89FT7623	ABZ89FT7630
Industry Canada Certification Number	109W-9000	109W-2400	109W-5200	109W-5400	109W-5700G
CE	DoCs are available at http://motorola.wirelessbroadbandsupport.com/doc.php				

ABOUT MOTOROLA WIRELESS NETWORK SOLUTIONS

Motorola delivers seamless connectivity that puts real-time information in the hands of users, giving customers the agility they need to grow their business or better protect and serve the public. Working seamlessly together with its world-class devices, Motorola's unrivaled wireless network solutions include indoor WLAN, outdoor wireless mesh, point-to-multipoint, point-to-point networks and voice over WLAN solutions. Combined with powerful software for wireless network design, security, management and troubleshooting, Motorola's solutions deliver trusted networking and anywhere access to organizations across the globe.

AP 105 ACCESS POINTS ARE COMPATIBLE WITH THE FOLLOWING SUBSCRIBER MODULES:

- CSM 110
- CSM 120
- CSM 130

www.motorola.com/pmp

MOTOROLA, MOTO, MOTOROLA SOLUTIONS and the Stylized M Logo are trademarks or registered trademarks of Motorola Trademark Holdings, LLC and are used under license. All other trademarks are the property of their respective owners. © 2011 Motorola Solutions, Inc. All rights reserved.

G3-24-112

