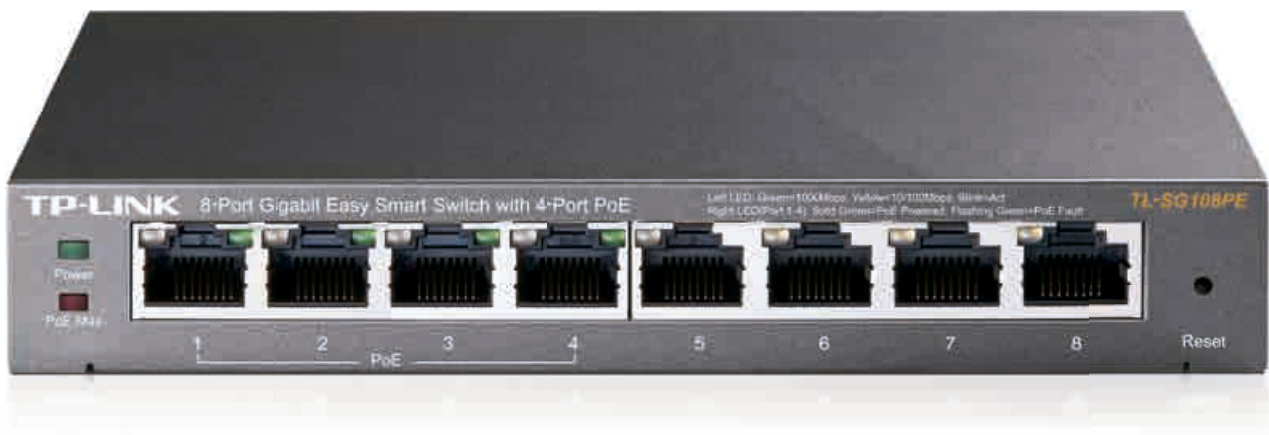




8-Port Gigabit Easy Smart Switch with 4-Port PoE

TL-SG108PE Datasheet



Overview

The TL-SG108PE is an 8-port Gigabit Easy Smart Switch with 4 PoE ports, represents a powerful upgrade from an unmanaged switch. It is designed specifically for small businesses that require simple network management and PoE function. The TL-SG108PE can connect and power up to four PoE devices, such as wireless access points (APs), IP cameras, and IP phones. Through its web-based user interface and management utility, the TL-SG108PE offers a variety of useful features, including network monitoring, traffic prioritization, and enhanced QoS. Additionally, with port-based, tag-based and MTU VLAN, TL-SG108PE can improve security and meet more network segmentation requirements.

Power Over Ethernet

4 of the 8 Auto-Negotiation RJ45 ports (port 1 to port 4) of the switch support Power over Ethernet (PoE) function. These PoE ports can automatically detect and supply power with those IEEE 802.3af compliant Powered Devices (PDs).

- Overload Arrangement

TL-SG108PE has the priority function which will help protect the system when the system power is overloaded. If all PoE PDs power consumption is $\geq 55W$, a priority will be arranged among the PoE ports, then the system will cut off the power of the lowest-priority port.

- Port Priority Function

Priority (port 1>port 2>port 3>port 4): This function will help protect the system if the system power becomes overloaded. For example, Port 1, 2, and 4 are using 15.4w (maximum power per port is 15.4W), the system power is 46.2w in total (PoE max LED will be red if all PoE PDs power consumption is $\geq 46W$). If there is an additional PD inserted to Port 3 with 10w then the system will cut off Port 4 to protect the system, this means Port 1, 2 will use 30w, and Port 3 will use 10w, and no power will be supplied to Port 4.

Effective Management


TL-SG108PE offers network monitoring for users to observe traffic behavior. Through its web-based user interface and management utility, the TL-SG108PE offers a variety of useful features, including network monitoring, traffic prioritization, and enhanced QoS. With Port Mirroring, Loop Prevention and Cable Diagnostics features, TL-SG108PE can identify and even locate connection problems on your business network. Moreover, administrators can designate the priority of the traffic based on Port Priority, 802.1P Priority and DSCP Priority, to ensure that voice and video are always clear, smooth and lag-free. Additionally, to improve security and network performance, TL-SG108PE supports MTU VLAN, port-based VLAN and 802.1Q-based VLAN functions. TL-SG108PE is an upgrade from the plug-and-play Unmanaged Switch, delivering great value while empowering your network and similarly delivering great value to the end user.

Easy to Use

TL-SG108PE is easy to use and manage. Auto MDI/MDI-X crossover on all ports eliminate the need for crossover cables or uplink ports. Auto-negotiation on each port senses the link speed of a network device (either 10, 100, or 1000 Mbps) and intelligently adjusts for compatibility and optimal performance. Its compact size makes it ideal for desktops with limited space. Dynamic LED lights provide real-time work status display and basic fault diagnosis.

Specifications

Hardware Features & Performance

Product Picture		
Model		TL-SG108PE
Hardware Features		
Physical Features	10/100/1000Mbps RJ45 Ports	8
	PoE Standard	802.3af
	PoE Ports	Port 1 ~ Port 4, up to 15.4W per port
	PoE Power Budget	55W
	External Power Supply	External Power Adapter(output: 48VDC/1.25A)
	Max Power Consumption	5.2W (no PD connected) 65.2W (with 55W PD connected)
	Fan Quantity	Fanless
	LED	Power, PoE Max, Speed/Link/Act, PoE Status (Port 1 ~ Port 4)
	Certification	CE, FCC
	Dimensions	6.2 * 4.0 * 1.0 in. (158 * 101 * 25 mm)
	Environment	Operating Temperature: 0℃ ~40℃ (32 ℉ ~104 ℉); Storage Temperature: -40℃ ~70℃ (-40 ℉ ~158 ℉); Operating Humidity: 10%~90% non-condensing; Storage Humidity: 5%~95% non-condensing
Performance	Switching Capacity	16Gbps
	Forwarding Rate	11.9Mpps
	MAC Address Table	4k
	Packet Buffer Memory	1.5Mb
	Jumbo Frame	15KB

Software Features

L2 Switching Features	<ul style="list-style-type: none">• IGMP Snooping<ul style="list-style-type: none">- IGMP Snooping- Supports 128 Groups• Link Aggregation<ul style="list-style-type: none">- Supports static link aggregation- Supports up to 4 aggregation groups, containing 4 ports per group• Port Mirroring<ul style="list-style-type: none">- One to One- Many to One• Cable Test• Loop Prevention
VLAN	<ul style="list-style-type: none">• Supports up to 32 VLANs (out of 4K VLAN IDs)• MTU/Port/802.1Q VLAN
Quality of Service (QoS)	<ul style="list-style-type: none">• Support Port-based/802.1p/DSCP priority• Support 4 priority queues• Rate Limit• Storm Control
Management	<ul style="list-style-type: none">• Web-based Graphic User Interface (GUI)• Easy Smart Configuration Utility<ul style="list-style-type: none">- Central Management- Friendly user interface
Ethernet Protocols	<ul style="list-style-type: none">• IEEE 802.3i 10BASE-T• IEEE 802.3u 100BASE-TX/FX• IEEE 802.3ab 1000BASE-T• IEEE 802.3x Flow Control• IEEE 802.1q VLANs/VLAN tagging• IEEE 802.1p QoS

Ordering Information

Switch	
Product Model	Description
TL-SG108PE	8-Port Gigabit Easy Smart Switch with 4-Port PoE
Router	
Product Model	Description
TL-ER604W	SafeStream Wireless N Gigabit Broadband VPN Router

www.tp-link.com

Specifications are subject to change without notice. TP-LINK is a registered trademark of TP-LINK Technologies Co., Ltd. Other brands and product names are trademarks or registered trademarks of their respective holders. Copyright © 2015 TP-LINK TECHNOLOGIES CO., LTD. All rights reserved.